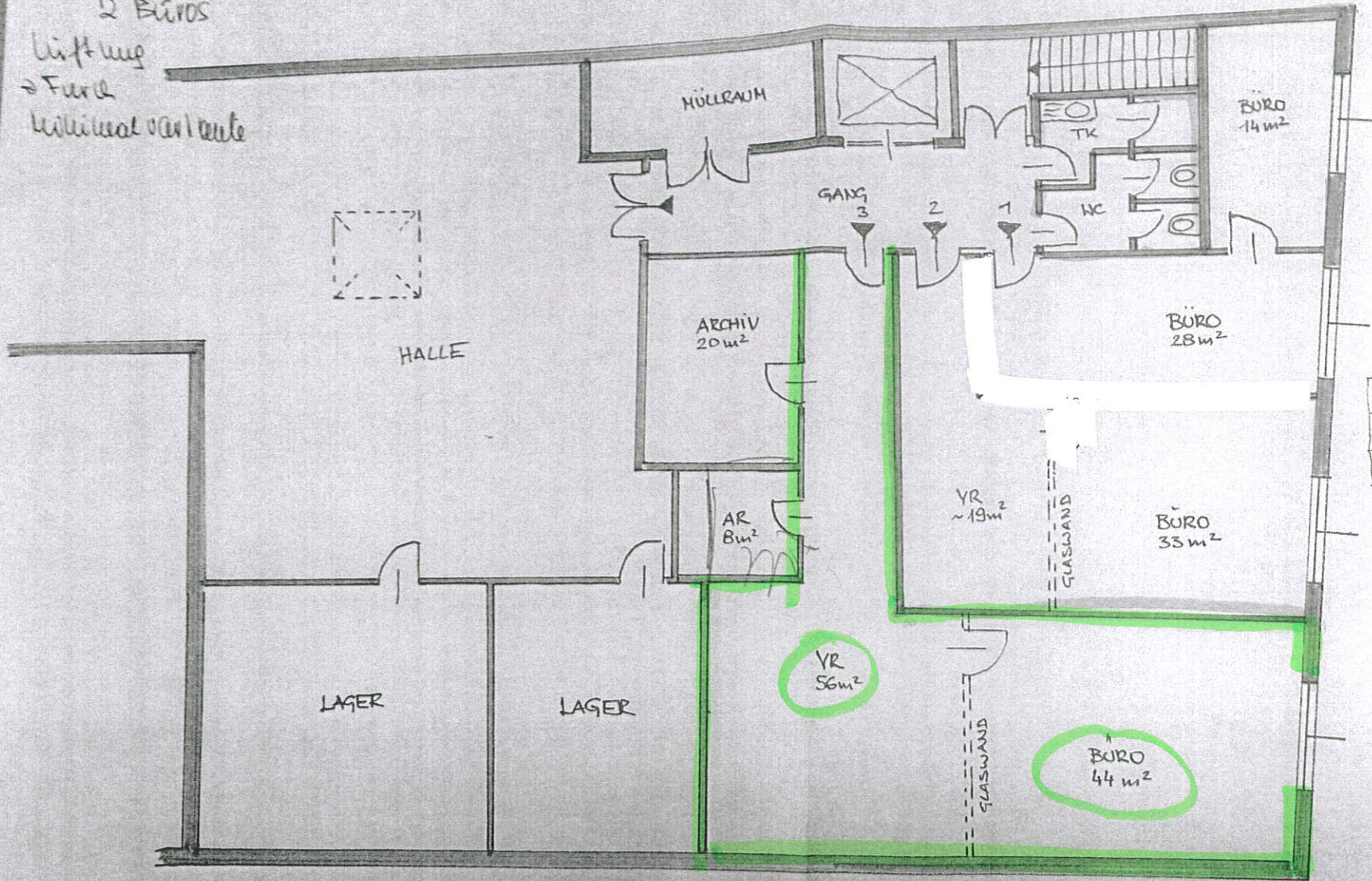


29. 9. 2016

2. Variante mit
2 Büros

Liftzug
→ Furch
Wohlfühlvariante



| | |
|-------------------------------|----------------|
| 1... ~43 m ² | 420,- |
| 2... ~58 m ² | 520,- |
| 3... ~128 m ² | 1.020,- |
| <u>Σ = ~229 m²</u> | <u>1.960,-</u> |

FENSTER = 3,7 m²
 10% ⇒ BÜRO 37 m²

1.OG - KAUFSTRASSE
 M 1:100 FRANZ JOSEF STRASSE
 23.09.2016